

OCCU HARRISBURG ITM KIOSK

OREGON COMMUNITY CREDIT UNION SOUTH 3RD STREET & KESLING STREET HARRISBURG, OREGON 97446



BUILDING OWNER

GIBSON & GIBSON LLC
125 E 6TH STREET
JUNCTION CITY, OREGON 97448
PHONE: (541) 998-2388

CONTACT: KURT STRAUBE
EMAIL: kstraube@darimart.com

ARCHITECT

TBG ARCHITECTS + PLANNERS
132 EAST BROADWAY, SUITE 200
EUGENE, OREGON 97401
PHONE: (541) 687-1010 FAX (541) 687-0625

CONTACT: JF ALBERSON (EXT 118)
EMAIL: jf@tbg-arch.com

CONTRACTOR

McKENZIE COMMERCIAL
865 WEST 2ND AVENUE
EUGENE, OREGON 97402
PHONE: (541) 343-7143

CONTACT: CHAD BLILLIE
EMAIL: cblillie@mcmail.biz

CONSULTANTS

MAE ENGINEERING
STRUCTURAL ENGINEER
1355 OAK STREET, SUITE 200
EUGENE, OREGON 97401
PHONE: (541) 494-8080

CONTACT: BRIAN OVERSTAKE
EMAIL: brian@mae-engineers.com

KPFF CONSULTING ENGINEERS, INC.

CIVIL ENGINEER
800 WILLAMETTE STREET, SUITE 400
EUGENE, OREGON 97401
PHONE: (541) 684-4902

CONTACT: ANNA BACKUS
EMAIL: Anna.Backus@kpff.com

DOUGHERTY LANDSCAPE ARCHITECTS INC.

LANDSCAPE ARCHITECT
474 WILLAMETTE STREET, SUITE 305
EUGENE, OREGON 97401
PHONE: (541) 683-5803

CONTACT: DAVID DOUGHERTY
EMAIL: David@dladesign.com

SSW ENGINEERS INC.

SURVEYOR
2350 OAKMONT WAY, SUITE 105
EUGENE, OREGON 97401
PHONE: (541) 495-8383

CONTACT: MIKE DAHRENS
EMAIL: miked@sswengineers.com

REVOLUTION ELECTRIC, INC.

ELECTRICAL DESIGNER
480 SHELLEY STREET, SUITE B
SPRINGFIELD, OREGON 97477
PHONE: (541) 505-8351

CONTACT: JEFF HATLEBERG
EMAIL: jeff@revolutionelectric.net

TENANT & APPLICANT

OREGON COMMUNITY CREDIT UNION
2880 CHAD DRIVE
EUGENE, OREGON 97408
PHONE: (541) 681-6401

CONTACT: MATT WILSON
EMAIL: mwilson@myOCCU.org

ABBREVIATIONS

&	AND	LAM	LAMINATE
∠	ANGLE	LAV	LAVATORY
@	AT	MATL	MATERIAL
⊕	CENTERLINE	MAX	MAXIMUM
∅	DIAMETER	MB	MARKER BOARD
±	PLUS OR MINUS	MECH	MECHANICAL
°	DEGREE	MFR	MANUFACTURER
#	POUND OR NUMBER	MH	MANHOLE
(E)	EXISTING	MIN	MINIMUM
AB	ANCHOR BOLT	MIRR	MIRROR
A/C	AIR CONDITIONING	MISC	MISCELLANEOUS
ACT	ACOUSTICAL CEILING TILE	MTD	MOUNTED
AD	AREA DRAIN	MTL	METAL
AFF	ABOVE FINISHED FLOOR	NIC	NOT IN CONTRACT
AHU	AIR HANDLING UNIT	NO	NUMBER
ALUM	ALUMINUM	NTS	NOT TO SCALE
ARCH	ARCHITECTURAL	OC	ON CENTER
ASF	ALUMINUM STOREFRONT	OD	OUTSIDE DIAMETER
BCS	BOARD	OFCI	OWNER FURNISHED CONTRACTOR INSTALLED
BD	BOARD	OFD	OVER FLOW DRAIN
BLKG	BLOCKING	OFF	OFFICE
BM	BEAM	OFOI	OWNER FURNISHED OWNER INSTALLED
BOT	BOTTOM	OPP	OPPOSITE
CB	CATCH BASIN OR CHALKBOARD	P-?	PAINT COLOR
CBB	CEMENT BACKER BOARD	PCC	PRECAST CONCRETE
CG	CORNER GUARD	PERF	PERFORATED
CJ	CONTROL JOINT	PL	PROPERTY LINE
CLG	CEILING	PLAM	PLASTIC LAMINATE
CLO	CLOSET	PLYWD	PLYWOOD
CLR	CLEAR	PR	PAIR
CMU	CONCRETE MASONRY UNIT	PS	PROJECTION SCREEN
CO	CLEANOUT	PTD	PAPER TOWEL DISPENSER
COL	COLUMN	QT	QUARRY TILE
CONC	CONCRETE	R	RADIUS OR RISER
CONT	CONTINUOUS	RA	RETURN AIR
CORR	CORRIDOR	RB	RESILIENT BASE
CPT	CARPET OR CARPET TILE	RD	ROOF DRAIN
CT	CERAMIC TILE	REF	REFRIGERATOR
DBL	DOUBLE	REINF	REINFORCED
DEPT	DEPARTMENT	REQD	REQUIRED
DF	DRINKING FOUNTAIN	RESIL	RESILIENT
DIA	DIAMETER	RM	ROOM
DIM	DIMENSION	RO	ROUGH OPENING
DISP	DISPENSER	SCD	SEAT COVER DISPENSER
DIV	DIVISION OR DIVIDE	SCHED	SCHEDULE
DN	DOWN	SD	STORM DRAIN OR SOAP DISPENSER
DS	DOWNSPOUT	SECT	SECTION
DWG	DRAWING	SHT	SHEET
EA	EACH	SIM	SIMILAR
EJ	EXPANSION JOINT	SND	SANITARY NAPKIN DISPOSAL
ELEC	ELECTRICAL	SNV	SANITARY NAPKIN VENDOR
ELEV	ELEVATOR	SPEC	SPECIFICATION
EOS	EDGE OF SLAB	SQ	SQUARE
EP	ELECTRICAL PANEL	SST	STAINLESS STEEL
EQ	EQUAL	STD	STANDARD
EQUIP	EQUIPMENT	STL	STEEL
EXH	EXHAUST	STOR	STORAGE
EXIST	EXISTING	STRUCT	STRUCTURAL
EXT	EXTERIOR	SUSP	SUSPEND
FA	FIRE ALARM	SV	SHEET VINYL
FD	FLOOR DRAIN	T&G	TONGUE & GROOVE
FE	FIRE EXTINGUISHER	TEL	TELEPHONE
FEC	FIRE EXTINGUISHER CABINET	THRU	THROUGH
FHC	FIRE HOSE CABINET	TO	TOP OF
FIN	FINISH	TOC	TOP OF CURB
FLR	FLOOR	TOS	TOP OF STRUCTURE OR SLAB
FLUOR	FLUORESCENT	TOW	TOP OF WALL
FOC	FACE OF CONCRETE OR CURB	TPD	TOILET PAPER DISPENSER
FOF	FACE OF FINISH	TPTN	TOILET PARTITION
FOS	FACE OF STUD	TYP	TYPICAL
FT	FOOT OR FEET	UN	UNLESS OTHERWISE NOTED
FTG	FOOTING	UR	URINAL
GA	GAUGE	VCT	VINYL COMPOSITION TILE
GALV	GALVANIZED	VERT	VERTICAL
GB	GRAB BAR	VEST	VESTIBULE
GWB	GYPNUM WALL BOARD	VFY	VERIFY
HB	HOSE BIBB	VIF	VERIFY IN FIELD
HD	HAND DRYER	WI	WITH
HDWD	HARDWOOD	WC	WATER CLOSET or WOOD CEILING
HM	HOLLOW METAL	WD	WOOD
HORIZ	HORIZONTAL	WDF	WOOD FLOORING
HR	HOUR	WDP	WOOD VENEER FACED PANELING
HSS	HOLLOW STRUCTURAL STEEL	WR	WASTE RECEPTACLE
HT	HEIGHT	W/O	WITHOUT
HVAC	HEATING, VENTILATION, AIR CONDITIONING	WOM	WALK OFF MAT
ID	INSIDE DIAMETER	WP	WATERPROOF
INSUL	INSULATION	WSCT	WAINSCOT
INT	INTERIOR	WWF	WELDED WIRE FABRIC

NOTE: THIS LIST IS INCOMPLETE. VERIFY ABBREVIATIONS WITH ARCHITECT

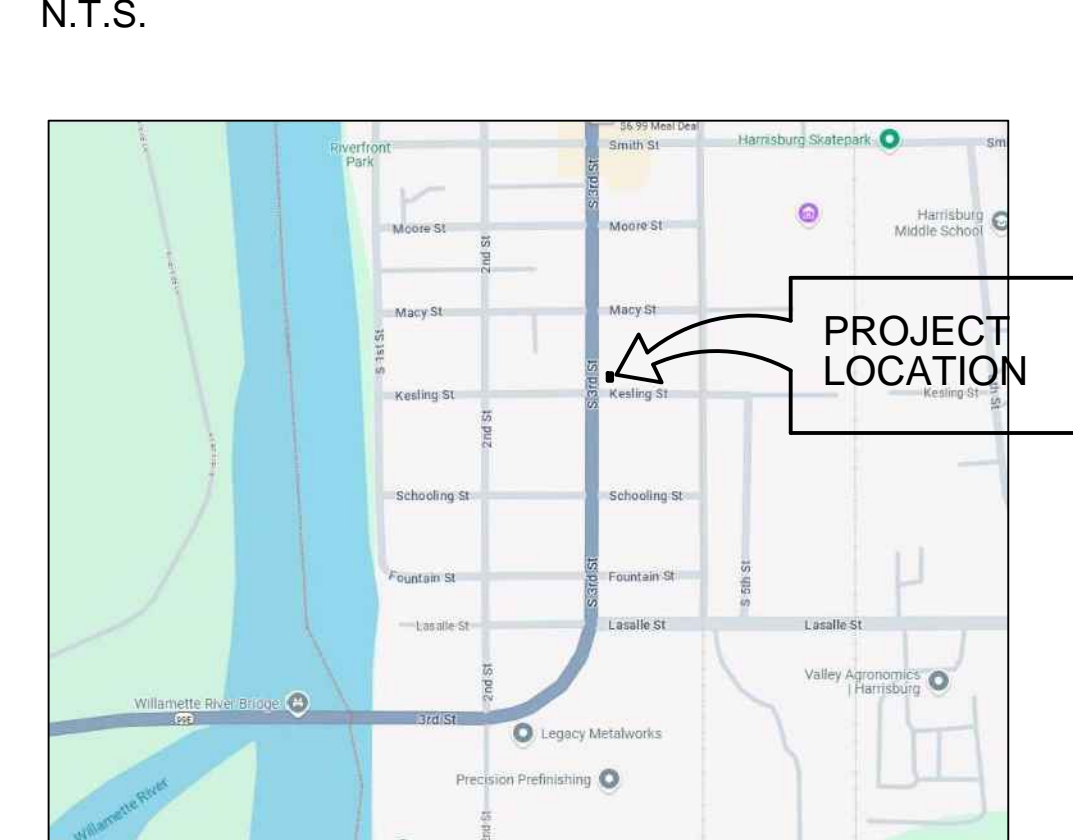
DRAWING INDEX

TITLE SHEET	T1
LANDSCAPE ARCHITECT	
LA.1	LANDSCAPE PLAN (FOR REFERENCE ONLY)
ARCHITECTURAL	
A1.1	SITE PLAN (FOR REFERENCE ONLY)
A2.1	PARTIAL ENLARGED SITE PLAN & EXTERIOR ELEVATIONS
ELECTRICAL	
SL-1	PHOTOMETRIC PLAN (FOR REFERENCE ONLY)

SYMBOLS

DETAIL REFERENCES	DWG. NO.	
	SHEET NO.	
SECTION REFERENCES	DWG. NO.	
	SHEET NO.	
KEY NOTE		
LEVEL TAG		
REVISION TAG		

VICINITY MAP



LEGAL DESCRIPTION

ASSESSOR'S MAP 15504W16AA
TAX LOT 11700

BASIS OF DESIGN

PROJECT DESCRIPTION: INSTALLATION OF A DRIVE-THROUGH ITM KIOSK WITH CANOPY UNIT INCLUDING ASSOCIATED PARKING, LANDSCAPING, UTILITIES & OTHER SITE INFRASTRUCTURE.

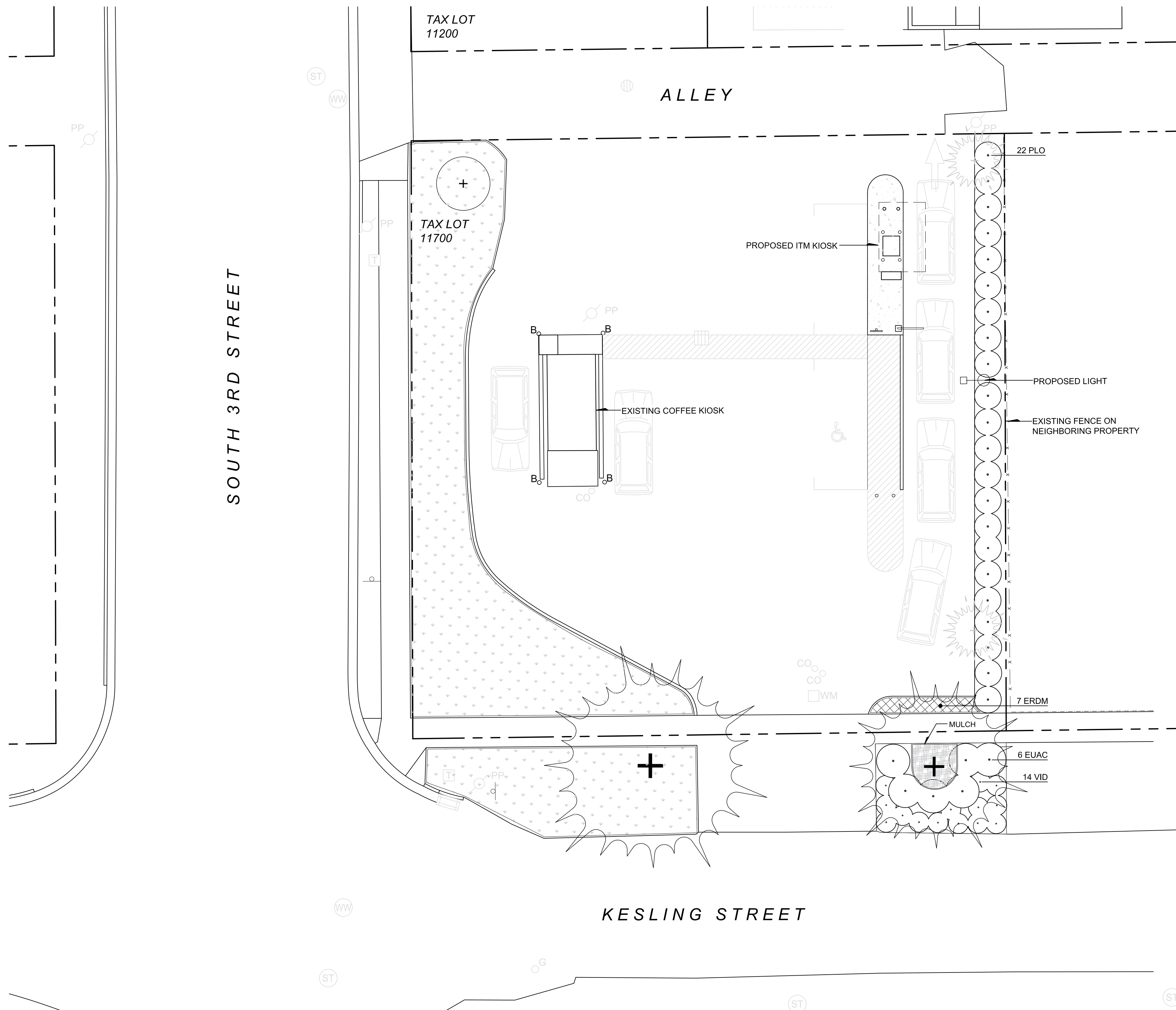
THE PROPOSED DRIVE-THROUGH USE REQUIRES A TYPE II LAND USE APPLICATION. A SEPARATE TYPE III VARIANCE REQUEST IS PROPOSED FOR 2 ADDITIONAL ILLUMINATED 8 SF SIGNS ON THE ITM KIOSK TOWER ELEMENT BOTH AT 15'-3" ABOVE GRADE.

SITE AREA: 9,879 SF
GROSS PROJECT AREA: +/- 3,276 SF
STRUCTURE: NOT OCCUPIABLE
BUILDING CODE: 2003 IBC W/ OREGON AMENDMENTS

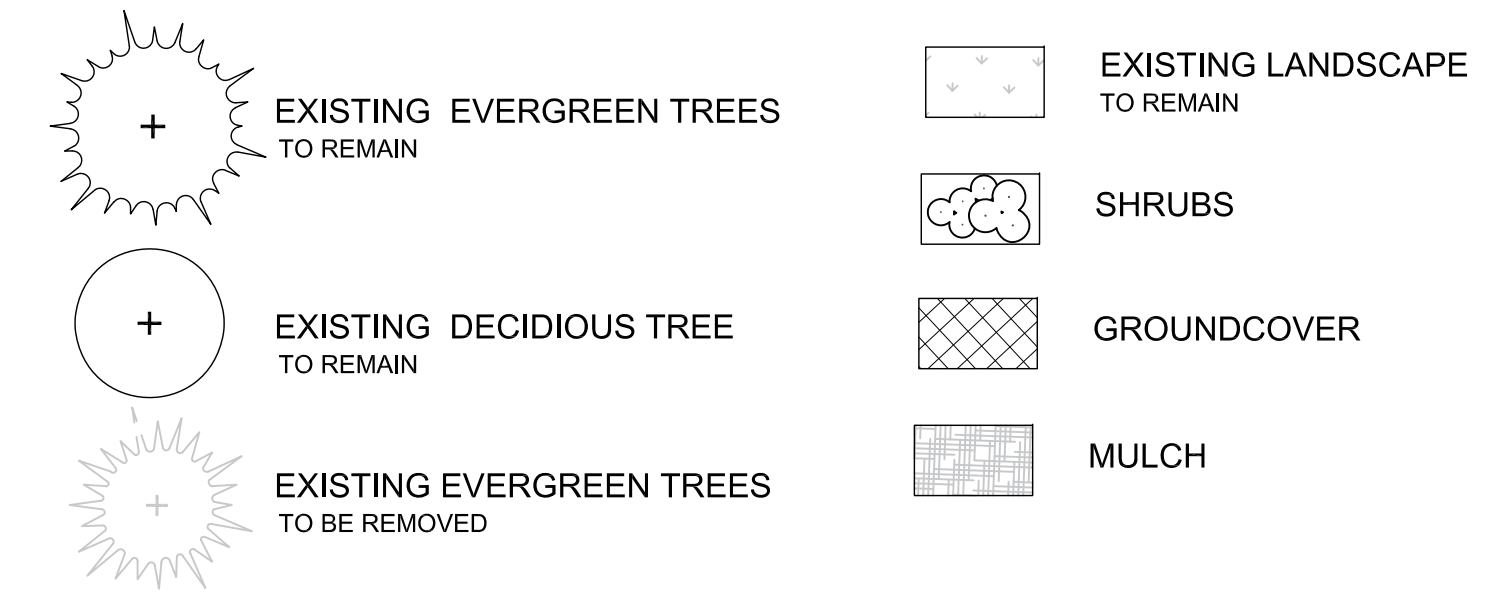
HARRISBURG ITM KIOSK
OREGON COMMUNITY CREDIT UNION
TYPE III VARIANCE APPLICATION
SOUTH 3RD STREET & KESLING STREET
HARRISBURG, OREGON 97446

TITLE SHEET

PROJECT #	202228
DRAWN	KGT
CHECKED	KT
DATE	11.14.2024
SHEET	T1



PLANTING LEGEND



PLANT SCHEDULE

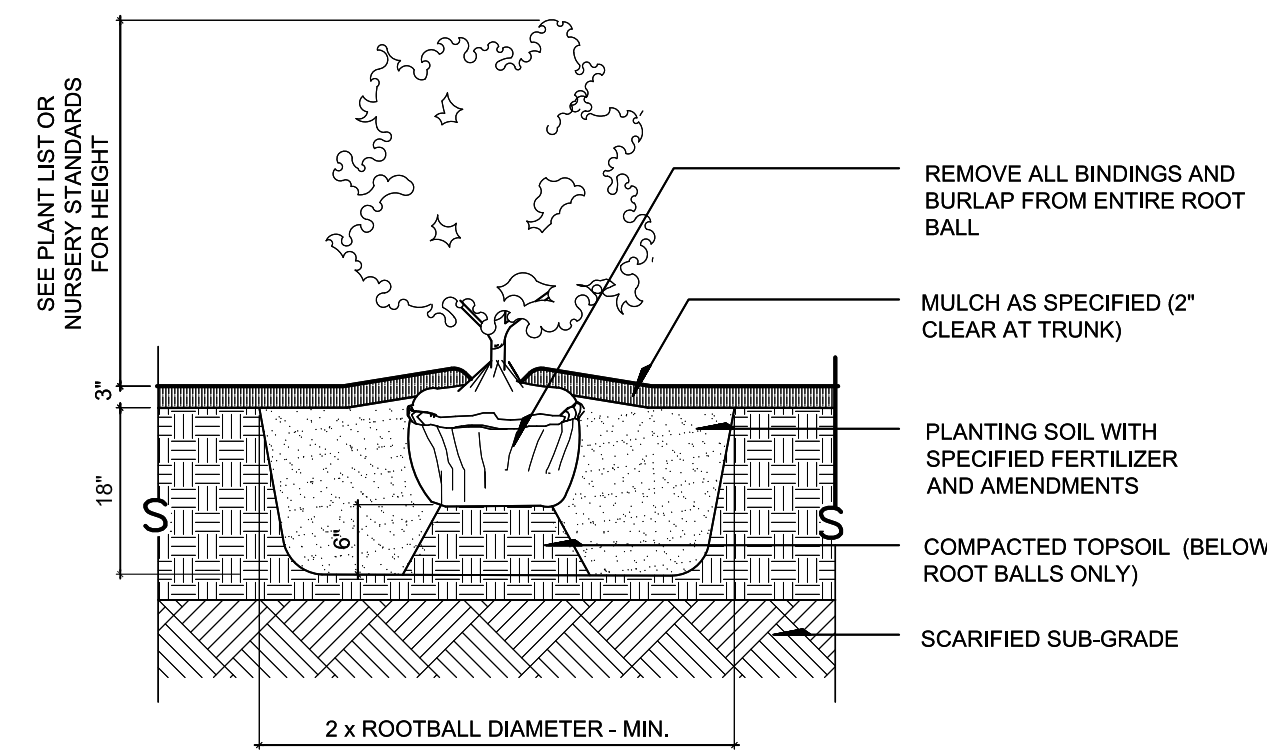
KEY	QTY.	BOTANICAL NAME	COMMON NAME	MIN. SIZE	COMMENTS
SHRUBS					
EUAC	6	<i>Euonymus alata 'Compacta'</i>	Compact Burning Bush	5 gal.	matching, full
PLO	22	<i>Prunus laurocerasus 'Otto Luyken'</i>	Otto Luyken English Laurel	5 gal.	matching, full
SMALL SHRUBS & GROUNDCOVERS					
ERDM	7	<i>Erica x darleyensis 'Mediterranean White'</i>	Mediterranean White Heath	1 gal.	matching, full, 10" o.c.
VID	14	<i>Viburnum davidii</i>	David Viburnum	3 gal.	matching, full

GENERAL NOTES

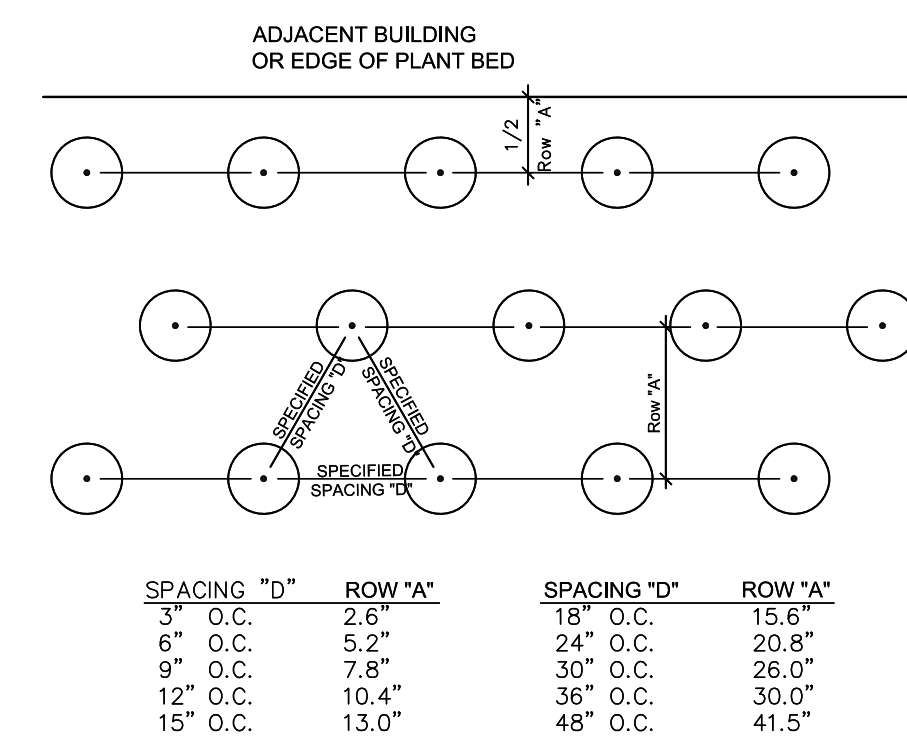
- PLANTINGS AS DESIGNED ARE INTENDED TO MEET SPECIFIC REQUIREMENTS, NO SUBSTITUTIONS OR SIZE CHANGES PERMITTED WITHOUT APPROVAL BY LANDSCAPE ARCHITECT.
- NOTIFY LANDSCAPE ARCHITECT 48 HOURS PRIOR TO THE FOLLOWING INSPECTIONS - SEE SPECIFICATIONS:
 - PLANT BED AND LAWN SUB BASE / EXCAVATION
 - FINISHED GRADING AT LAWNS AND PLANT BEDS
 - PLANT MATERIAL ON-SITE INSPECTION
 - PLANT MATERIAL LAYOUT REVIEW
- PLANT LIST QUANTITIES ARE FOR CONTRACTOR CONVENIENCE ONLY. VERIFY ACTUAL QUANTITIES ON PLAN.
- SEE ARCHITECTURAL SHEETS FOR SITE PLAN

IRRIGATION SYSTEM DESCRIPTION

- NEW IRRIGATION SYSTEM TO BE DESIGN BUILD BY CONTRACTOR.
- PROVIDE AUTOMATIC, UNDERGROUND IRRIGATION SYSTEM FOR ALL NEW PLANT BED AREAS.
- PROVIDE HEAD TO HEAD COVERAGE.
- PROVIDE SEPARATE ZONES FOR DIFFERENT SOLAR ORIENTATIONS.
- PROVIDE HEAD LAYOUT TO MINIMIZE OVERSPRAY ONTO PAVED SURFACES.
- PROVIDE BACKFLOW PREVENTER AS REQUIRED BY CODE.

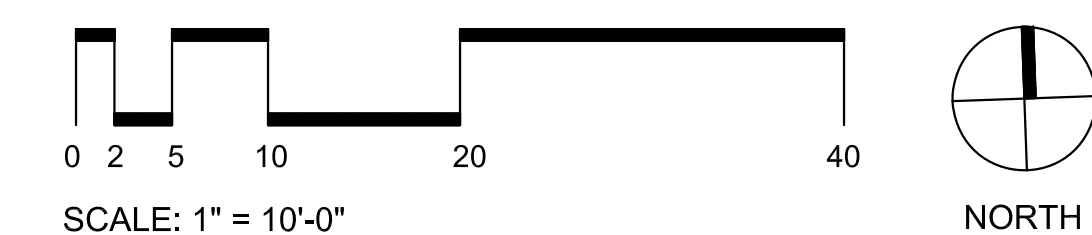


1 TYPICAL SHRUB PLANTING SECTION
SCALE: 1/2" = 1'-0"



2 GROUNDCOVER SPACING DIAGRAM PLAN
NTS

LANDSCAPE PLAN



DLA
DOUGHERTY
LANDSCAPE
ARCHITECTS

474 Willamette Street
Suite 305
Eugene, Oregon 97401

P 541.683.5803
F 541.683.8183

www.DLAdesign.com

FOR REFERENCE ONLY

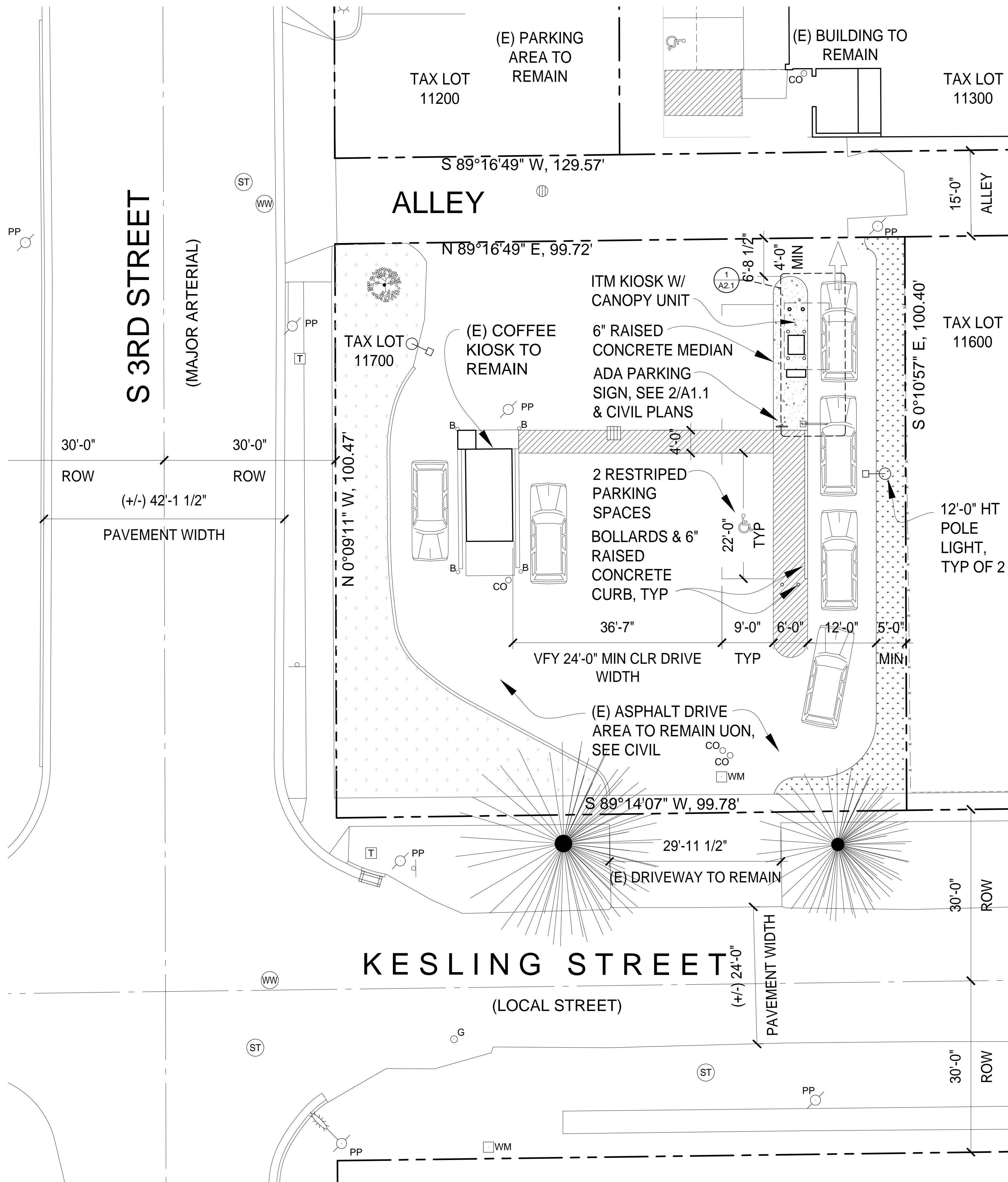
HARRISBURG ITM KIOSK
OREGON COMMUNITY CREDIT UNION
TYPE II LAND USE APPLICATION
SOUTH 3RD STREET & KESLING STREET
HARRISBURG, OREGON 97446

LANDSCAPE PLAN

REGISTERED
279
David J. Dougherty
LANDSCAPE ARCHITECT
OREGON

PROJECT # 202228
DRAWN LMS
CHECKED DJD
DATE 11.12.2024

SHEET
LA.1



GENERAL NOTES

- ALL PUBLIC IMPROVEMENTS AS REQUIRED WILL BE PRIVATELY CONSTRUCTED AND SHALL CONFORM TO THE 2017 OREGON STANDARD SPECIFICATIONS FOR CONSTRUCTION AS ISSUED BY THE OREGON DEPARTMENT OF TRANSPORTATION.
- OUTDOOR LIGHTING WILL COMPLY WITH CITY STANDARDS AT THE TIME OF BUILDING PERMIT SUBMITTAL AND BUILDING OCCUPANCY. EXACT OUTDOOR LIGHTING SPECIFICATIONS WILL BE SUBMITTED AT THE TIME OF THE BUILDING PERMIT APPLICATION.

PARKING CALCULATIONS

VEHICLE PARKING

VEHICLE PARKING CALCULATIONS ARE PROVIDED FOR THE DEVELOPMENT SITE

VEHICLE PARKING SPACES REQUIRED (HMC TABLE 18.80.0303.1)

EXISTING RESTAURANT USE	1: 200 SF GROSS FLOOR AREA	1 SPACE
PROPOSED ITM BANK USE	135 SF/200 SF	1 SPACE
(EQUIPMENT/NOT HABITABLE SPACE BUT PARKING PROVIDED CONSERVATIVELY FOR MAINTENANCE PROVIDER)	1: 300 SF	1 SPACE
	10 SF/300 SF	2 SPACES
TOTAL VEHICLE PARKING SPACES REQUIRED		2 SPACES
TOTAL VEHICLE PARKING PROPOSED		2 SPACES
2 PARALLEL SPACES TO BE RESTRIPTED STANDARD	(9'-0" X 22'-0")	1 SPACE
ACCESSIBLE	(9'-0" X 22'-0" W/ 6'-0" ACCESS AISLE)	1 SPACE

BICYCLE PARKING

THE PROPOSED ITM BANK KIOSK IS A VEHICLE CENTERED USE WITHOUT A BUILDING SO BICYCLE PARKING IS NOT REQUIRED.



132 East Broadway, Suite 200
Eugene, Oregon 97401
p: 541.687.1010
f: 541.687.0625



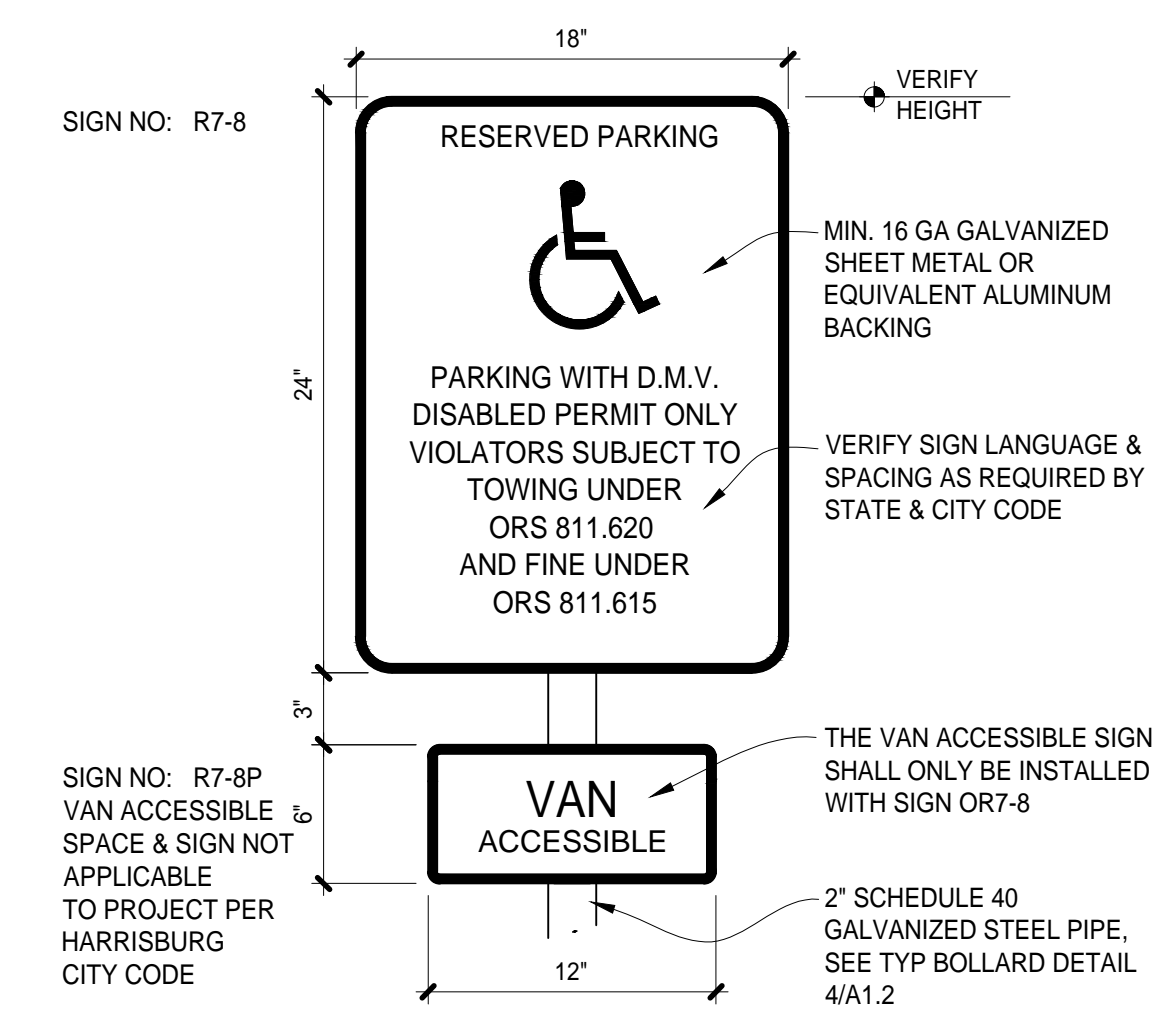
FOR REFERENCE ONLY

HARRISBURG ITM KIOSK
OREGON COMMUNITY CREDIT UNION
TYPE II LAND USE APPLICATION
SOUTH 3RD STREET & KESLING STREET
HARRISBURG, OREGON 97446

SITE PLAN

PROJECT #	202228
DRAWN	BR/KGT
CHECKED	KT
DATE	11.12.2024

SHEET **A1.1**



THE ACCESSIBLE PERSON PARKING SIGN IS USED TO DESIGNATE A PARKING SPACE FOR VEHICLES WITH A DMV PERMIT AS STATED. THIS IS THE STANDARD SIGN FOR USE OFF THE STATE HIGHWAY SYSTEM.

LEGEND

- (E) BUILDING FOOTPRINT
- EXISTING PROPERTY LINE
- (E) LANDSCAPE AREA TO REMAIN, SEE LANDSCAPE
- LANDSCAPE AREA, SEE LANDSCAPE
- ON-SITE PEDESTRIAN CROSSWALK STRIPING
- RAISED CONCRETE ISLAND, UON
- (E) TREE TO REMAIN, SEE SURVEY
- (E) STREET TREE TO REMAIN, SEE SURVEY
- FOR ALL UTILITY INFORMATION SEE THE SURVEY, DEMO PLAN, AND CIVIL DRAWINGS

1 SITE PLAN
A1.1 1" = 10'-0"

2 TYP ADA PARKING SIGN
A1.1 1-1/2" = 1'-0"

GENERAL NOTES

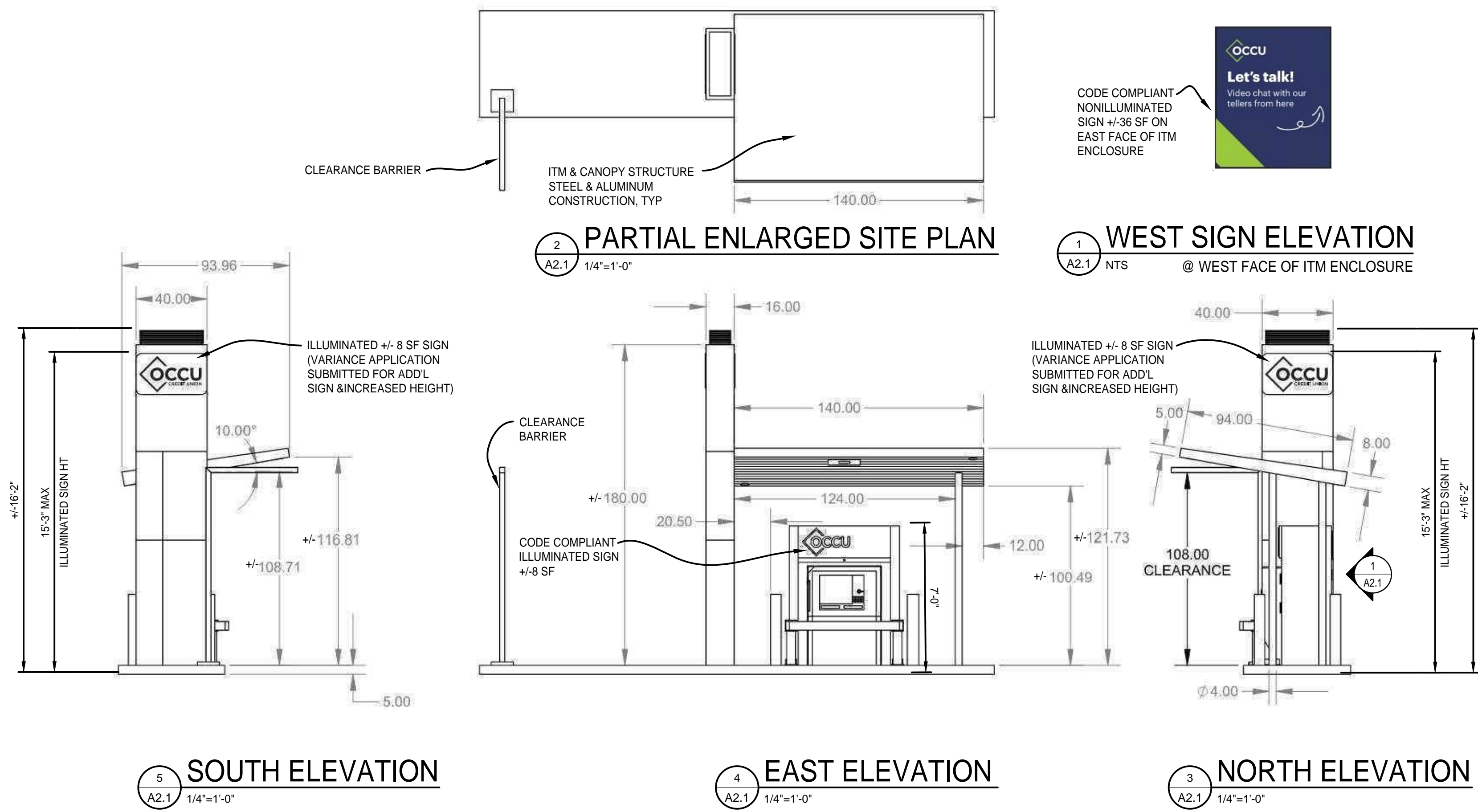
1. ARCHITECTURAL ELEVATIONS, FINISHES AND DIMENSIONS (EXCEPT FOR PROPOSED ILLUMINATED SIGN HEIGHT, WHICH WILL BE EVALUATED IN SEPARATE VARIANCE APPLICATION) ARE PRESENTED SCHEMATICALLY FOR REFERENCE ONLY AND ARE SUBJECT TO CHANGES AT THE TIME OF BUILDING PERMIT SUBMITTAL, AT WHICH TIME PLANS WILL MEET RELEVANT CODE STANDARDS.



ARCHITECTS
+ PLANNERS
132 East Broadway, Suite 200
Eugene, Oregon 97401
p: 541.687.1010
f: 541.687.0625



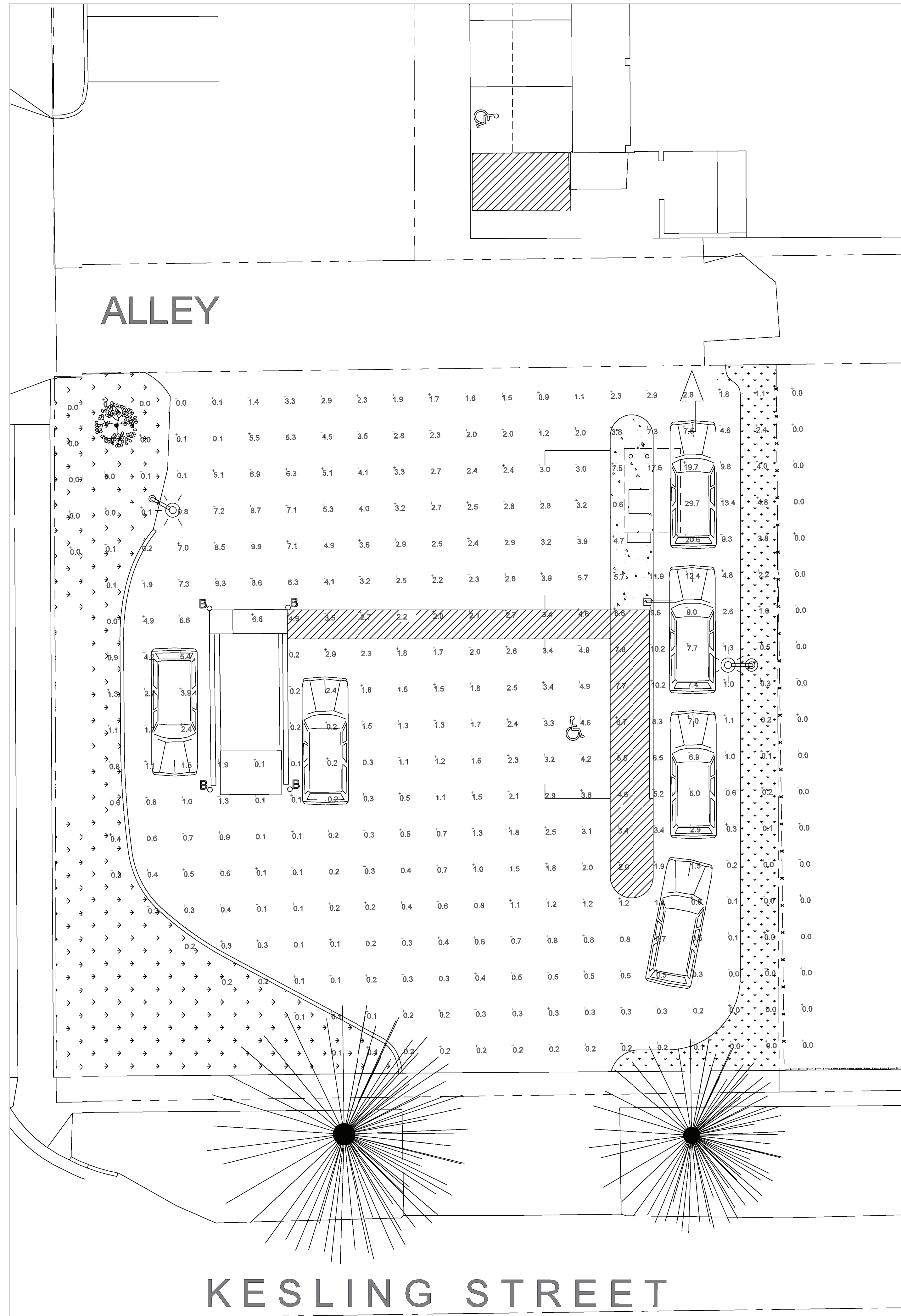
HARRISBURG ITM KIOSK
OREGON COMMUNITY CREDIT UNION
 TYPE III VARIANCE APPLICATION
 SOUTH 3RD STREET & KESLING STREET
 HARRISBURG, OREGON 97446



PARTIAL ENLARGED SITE PLAN & EXTERIOR ELEVATIONS

PROJECT # 202228
DRAWN KGT
CHECKED KT
DATE 11.14.2024

SHEET **A2.1**



Light Fixture						
Symbol	Manufacturer	Catalog Number	Description	Number of Fixtures	Mounting Height	Mounting Type
	Lithonia Lighting	DSX1_LED_P3_30K_70CRI_BLC4_MVOLT	Parking Lot Lighting: Pole mounted LED light fixture or fixture with equivalent standards. Light fixture to be 50-100 Watts/5000-9600 lumens. Light fixture to have Type IV Backlight Control	2	12 ft	Top of Pole

Photometric Results Reported as Footcandle (Fc)

SANDOW ENGINEERING

160 MADISON STREET SUITE A
Eugene, Oregon 97402 (PH) 541.513.3376
www.sandowengineering.com



FOR REFERENCE ONLY

HARRISBURG ITM KIOSK
OREGON COMMUNITY CREDIT UNION
TYPE II LAND USE APPLICATION
SOUTH 3RD STREET & KESLING STREET
HARRISBURG, OREGON 97446

OUTDOOR LIGHTING PHOTOMETRIC PLAN

PROJECT # 6056
DRAWN KS
CHECKED KS
DATE 11.12.2024

SHEET SL-1

